

**Identified types in the Wilhelm Hillebrand collections in the herbarium of the Royal Botanic Gardens, Melbourne.**

James W. Grimes

Plant Sciences and Biodiversity, Royal Botanic Gardens, Melbourne, Birdwood Ave.  
South Yarra, VIC 3141 Australia  
email: jgrimes@rbgmelb.org.au

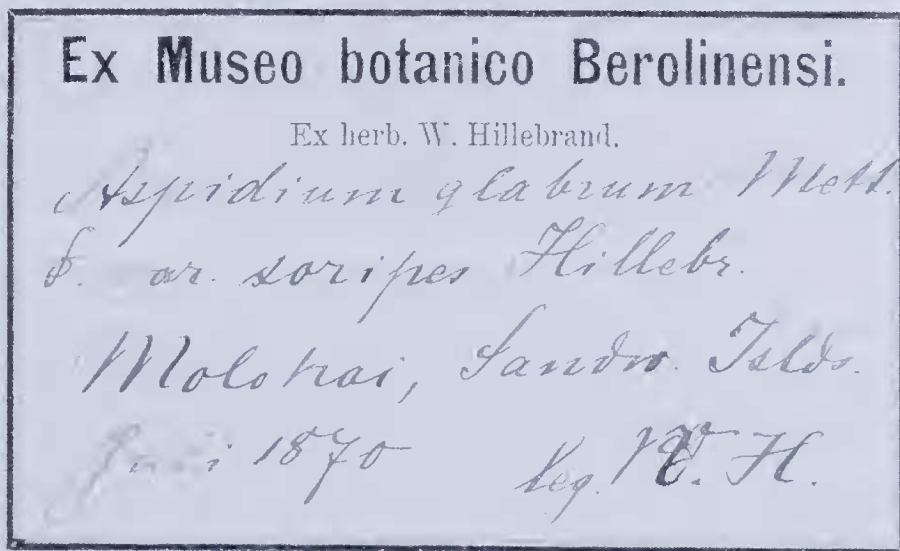
*Abstract*

A list of clearly identified and probable types from the Hawaiian collections of Wilhelm Hillebrand is presented. Of the well over 200 taxa published by Hillebrand, there are 102 verified types, and 4 possible types deposited at MEL. A short discussion of how these collections came to be deposited at MEL is provided.

**Introduction**

Wilhelm Hillebrand, Prussian physician, lived for 20 years in Hawai'i and amassed a personal herbarium of 12,000–15,000 sheets (Lammers 1994). This herbarium was the basis of his *Flora of the Hawaiian Islands* (1888), published by his son two years after his death. When Hillebrand died his herbarium was bequeathed to the Berlin-Dahlem Museum, and his collections were among those destroyed during World War II. Duplicates of his collections are fairly widely distributed (Stafleu & Cowan 1979), and it is reported in *Taxonomic Literature II* that a set of duplicates is present at MEL. Nonetheless, no information about these collections has yet been published; consequently, the collections at MEL are often not included in discussions of Hillebrand's duplicates (cf. Sayre 1975).

Ferdinand Mueller, first Government Botanist of Victoria, managed to acquire an impressively large set of duplicate collections from around the world. Unfortunately it



**Figure 1.** An example of the kind of label found on all of Hillebrand's types lodged at MEL.



**Figure 2.** An example of a second kind of label found on Hillebrand's types of ferns.

cannot be known for certain when and how most of these specimens came to be at MEL as F. Mueller's correspondence was destroyed during a move of the MEL herbarium in 1934–35 (Pescott 1982). In the case of the Hillebrand collections there is contradictory information. For instance, all collections at MEL have labels stating 'Ex Museo botanico Berolinensi.' (Fig.1), leading one to believe the plants were distributed from B, and, given the consistency in the labels, that they came in one shipment. However, the pteridophytes have not only this kind of label, but also a second (Fig.2). It is possible that the ferns came in a separate shipment.

Mueller lists Hillebrand in his Annual Report of the Government Botanist to Parliament, 1864–65, (MEL library archives) as having donated dried plant specimens; but Hillebrand's collections were bequeathed to B after his death, and, in 1865 he was still living in Hawai'i. These collections therefore are undoubtedly not part of the *Reliquae Hillebrandianae*. It is reported (Corn 1983) that Hillebrand and Mueller became friends when Hillebrand went plant collecting with Mueller during a visit to Australia, and Corn states (1983) that the two are known to have exchanged plant material.

Though the two men collected together, in only one instance have I found that a Hillebrand collection from Australia is cited as a syntype for a species described by Mueller (*i.e.*, *Erysimum bleunodes*); however, no syntype is deposited at MEL. Furthermore, though other species are named by Mueller in honour of Hillebrand (e.g. *Eriostemon hillebrandii*, *Veronica hillebrandii*), no duplicates of any collections made by Hillebrand in Australia have been found at MEL. How large the set of his collections from Australia, and if he kept them in his personal herbarium, is not known. It is likely they were destroyed at B.

Corn (1983) first brought attention to the duplicate set of Hillebrand's collections deposited at the Royal Botanic Gardens, Melbourne. She noted that she photographed 569 sheets of flowering plants and ferns, and distributed copies of these photos (Corn, 1983, unpublished ms.). Apparently no collections of lower plants or fungi are represented. Most of the foreign material that Mueller acquired for MEL remains unmounted. And though Corn did search through the Polynesian set, she did miss some specimens. It is therefore likely that there is somewhat more than the 569 sheets reported by Corn deposited in MEL.

As Hillebrand's own herbarium bequeathed to Berlin was destroyed, and duplicates of his collections are widely distributed, typification of his names remains a problem (Lammers 1994). It is unlikely that any herbarium has a complete set of his duplicates. As was typical for 19<sup>th</sup> century collectors, types were not clearly designated by

Hillebrand. It is in the interest of informing researchers who may have to designate lecto- or neotypes, that a list of clearly identified or probable duplicates of the syntypes present in MEL is herein presented. If lectotypification or neotypification has already been done, that is noted. It should not be assumed that this list is complete, as the unmounted material in the foreign herbarium at MEL still surpasses 250,000 sheets.

Following the basionyms, synonyms are provided and are taken from Wagner *et al.* (1990), unless otherwise stated. Following in single quotes is any information on the label (other than the plant name) presented verbatim. When a type has been annotated by another researcher that it also noted. Ferns are presented first, then flowering plants in alphabetical order by family. As Hillebrand did not assign collection numbers, the MEL herbarium number of each sheet is given.

Of the 560-some collections by Hillebrand reported at MEL, verified types are listed below. Though an insignificant number of collections in comparison to the estimated size of Hillebrand's herbarium, the number of duplicate types is substantial.

### List of verified types

#### PTERIDACEAE

- Aspidium glaberrimum* Mett. var. *striatum* W.F. Hillebr., Fl. Haw. Is., 577. 'Molokai, Sandw. Islds. Juli 1870. Leg. W.H.' (MEL 587939).  
*Asplenium insititum* Brack. var. *grandipinna* W.F. Hillebr., Fl. Haw. Is., 599. 'Kaala; Oahu. 3000 ft. No. 43<sup>c</sup>. coll. D. Baldwin.' (MEL 1520643).  
*Asplenium mannii* W.F. Hillebr. var. *dareoides* W.F. Hillebr., Fl. Haw. Is., 595. 'Makaleha, Sandw. Is. coll. W.H.' (MEL 587940).  
*Asplenium marginale* W.F. Hillebr., Fl. Haw. Is., 613. 'Molokai.' (MEL 1520441).  
*Asplenium pseudofalcatum* W.F. Hillebr., Fl. Haw. Is., 599. 'Oahu, Nuuanu, Molokai (Halawa).' (MEL 587944) and 'Oahu, Sandw. Is.' (MEL 587945).  
*Asplenium sphenotomum* W.F. Hillebr., Fl. Haw. Is., 599. 'Kauai, coll. Knudsen.' (MEL 587947).  
*Polypodium tamariscinum* Kaulf. var. *montanum* W.F. Hillebr., Fl. Haw. Is., 556. 'Kauai, Sandw. Islds.' (MEL 1520613).  
*Pteris irregularis* Kaulf. var. *linearis* W.F. Hillebr. Fl. Haw. Is., 628. 'as *Pteris irregularis* Kaulf. b. Sandw. Islds.' (MEL 1520621).

#### APOCYNACEAE

- Vallesia macrocarpa* W.F. Hillebr., Fl. Haw. Is., 297 = *Pteralyxia macrocarpa* (W.F. Hillebr.) K. Schum. 'Oahu. leg. Hbd.' (MEL 587762).

#### ARALIACEAE

- Triplasandra meiandra* W.F. Hillebr., Fl. Haw. Is., 152 = *Tetraplasanda oahnensis* (A. Gray) Harms 'Wailupe.' (MEL 587937).

#### ASTERACEAE

- Argyroxiphium virescens* W. F. Hillebr., Fl. Haw. Is., 219. 'OH. Maui. Sandw. Is. leg. Lydgate.' (MEL 1520480).  
*Campylotheca macrocarpa* W.F. Hillebr. b var. *ovatifolia* W.F. Hillebr., Fl. Haw. Is., 214 = *Bidens macrocarpa* (A. Gray) Sherff. As 'Campylotheca macrocarpa var. b Oahu. leg. Hnd.' (MEL 1520559).  
*Campylotheca molokaiensis* W.F. Hillebr., Fl. Haw. Is., 212 = *Bidens molokaiensis* (W.F. Hillber.) Sherff. 'Molokai, Sandwich Inseln. leg. Hbd.' (MEL 1520478).  
*Dubautia laxa* Hook & Arn. var. *hirsuta* W.F. Hillebr., Fl. Haw. Is., 223 = *Dubautia laxa* subsp. *hirsuta* (W.F. Hillebr.) G. Carr 'W. Maui. Sandw. Inns. leg. Hbd.' (MEL 1520387).  
*Hesperomannia arborescens* W.F. Hillebr., Fl. Haw. Is., 232. 'W. Maui. Sandw. Ins. Leg. Bishop.' (MEL 1520560).

- Lipochaeta hastata* W.F. Hillebr., Fl. Haw. Is., 208 = *Lipochaeta heterophylla* A. Gray 'Lanai, Sandw. Ins. leg. Hbd.' (MEL 78098).
- Raillardia uolokaiensis* W.F. Hillebr., Fl. Haw. Is., 226. 'Molokai, Sandwich Islands. leg. Hbd.' (MEL 78108). According to Carr (1990, Man. Fl. Pl. Hawaii, p. 292) this is a hybrid between *Dubautia linearis* subsp. *opposita* and *D. scabra* subsp. *leiophylla*.
- Remya maniensis* W.F.Hillebr., Fl. Haw. Is., 194. 'Maui, Sandw. Ins. leg. Hbd.' (MEL 78112).
- Tetraulopium filiforme* Sherff, var. *filiforme*, Bot. Gaz. 95: 498 (1934), ISOTYPE, *fide* T. Lowrey, 1986. As '*Tetraulopium teuerrinum* N. Oahu. leg. Hbd.' (MEL 78119).
- Tetraulopium lepidotum* (Lessing) Sherff var. *luxurians* W.F. Hillebr., Fl. Haw Is., 199. LECTOTYPE, design. by T. Lowrey, 1986 = *Tetraulopium lepidotum* subsp. *lepidotum*. As '*Tetraulopium chauissousis b luxurians*. Oahu. leg. Hbd.' (MEL 78115).
- Wilkesia grayaya* W.F. Hillebr., Fl. Haw. Is., 220 = *Argyroxiphium grayanum* (W.F. Hillebr.) Degener. 'W. Maui, Sandw. Inl.. leg. Hbd.' (MEL 78120).

## BRASSICACEAE

- Lepidium arbuscula* W.F. Hillebr., Fl. Haw. Is., 10. 'Oahu, Waianae. leg. Hillebrand.' (MEL 1520481).

## CAMPANULACEAE

- Clermontia coerulea* W.F. Hillebr., Fl. Haw. Is., p. 243. ISOLECTOTYPE design. Roek, 1919, *fide* T. Lammers, 1991. = *Clermontia clermontioides* (Gaudich.) A. Heller subsp. *clermontioides* 'Hawaii. leg. Hillebrand.' (MEL 587783).
- Clermontia macrocarpa* Gaudich. var. *rosea* W.F. Willebr., Fl. Haw. Is., p. 240. LECTOTYPE. design. T. Lammers 1991: 39 = *Clermontia kakeana* Meyen. 'Oahu. leg. Hillebrand.' (MEL 587786).
- Clermontia multiflora* W.F. Hillebr., Fl. Haw. Is., 242. 'Oahu. leg. Hillebrand.' (MEL 587767). Ver. T. Lammers, III/89. Though Lammers annotated this as an ISOLECTOTYPE, it was not cited in his monograph of *Clermontia* (1991).
- Clermontia multiflora* W.F. Hillebr. var. *micrantha* W.F. Hillebr., Fl. Haw. Is., 242. ISOLECTOTYPE, design. by T. Lammers 1991: 59. 'Maui. leg. Hillebrand.' (MEL 587837).
- Clermontia pallida* W.F. Hillebr., Fl. Haw. Is., 241. ISOLECTOTYPE. design. by T. Lammers, 1991: 50. 'Molokai, Sandw. Ins. leg. Hillebrand.' (MEL 587839).
- Cyanea couata* W.F. Hillebr., Fl. Haw. Is., 256. SYNTYPE, ann. T. Lammers, III/89 'Haleakala, W. Maui. Sandw. Ins. leg. Hillebrand.' (MEL 587857).
- Cyanea gibsonii* W.F. Hillebr., Fl. Haw. Is., 263. LECTOTYPE design. T. Lammers, 1988: 503 = *C. macrostegia* W.F. Hillebr. subsp. *gibsonii* (W.F. Hillebr.) Lammers. 'Lanai, Sandw. Ins. leg. Hillebrand.' (MEL 587859)
- Cyanea holophylla* W. F. Hillebr., Fl. Haw. Is., 257. ISOLECTOTYPE, design. by T. Lammers, 1994: 559. = *C. scabra* W. F. Hillebr. (MEL 587861).
- Cyanea macrostegia* W.F. Hillebr., Fl. Haw. Is. 263. ISOLECTOTYPE, design. by T. Lammers, 1994: 562. = *Cyanea macrostegia* W.F. Hillebr. subsp. *macrostegia*. 'West. Maui. Sandw. Ins. leg. Hillebrand.' (MEL 587856).
- Cyanea scabra* W.F. Hillebr., Fl. Haw. Is., 256. SYNTYPE, ver. T. Lammers, *in annot.* 1989. 'Kaanapali, W. Maui. Sandwich I. leg. Hillebrand.' (MEL 587930).
- Cyanea solauacea* W.F. Hillebr., Fl. Haw. Is., 259. SYNTYPE, ver. T. Lammers, *in annot.* 1989. 'Kalae auf Molokai, Sandw. Ins. leg. Hillebrand.' (MEL 587931).
- Cyanea solenocalyx* W.F. Hillebr., Fl. Haw. Is., 258. SYNTYPE, ver. T. Lammers, *in annot.* 1989. 'Molokai, Sandw. ins. leg. Hillebrand.' (MEL 587929).
- Cyanea superba* A.Gray var. *velutina* Roek, Monogr. Stud. Haw. Lobelioid. 157. 1919. ISOTYPE, ver. T. Lammers, *in annot.* 1989. = *Cyanea superba* A.Gray subsp. *superba*. As '*Cyanea superba* Gray var. b. Oahu. leg. Hillebrand.' (MEL 587769).

*Delissea laciuata* W.F. Hillebr., Fl. Haw. Is., 249. SYNTYPE, ver. T. Lammers, *in annot.* 1989. 'Oahu. leg. Hillebrand.' (MEL 587773).

*Lobelia typlenca* W.F. Hillebr., Fl. Haw. Is., 238. 'West Maui. Sandw. Ins. leg. Hillebrand.' (MEL 587836).

*Rollandia grandifolia* Hillebr. Fl. Haw. Is., 245. SYNTYPE, ver. T. Lammers, *in annot.* 1989 = *Rolaudia crispa* Gaudich. 'Oahu. leg. Hillebrand.' (MEL 587834).

## CYPERACEAE

*Carex moutis-eeka* W.F. Hillebr., Fl. Haw. Is., 486. 'Mount Eeka, Sandw. Ins. leg. Hillebrand.' (MEL 587892).

*Cyperus hillebrandii* Boeck., Flora 63: 436 (1880). ISOTYPE, ver. J. H. Kern, 1953 'Haleakala, leg. Hillebrand.' (MEL 587896).

*Cyperus polystachys* Rottb. var  $\beta$  *pallidus* W.F. Hillebr., Fl. Haw. Is., 463 = *Pycnus polystachyos* (Rottb.) P. Beauv. 'Sandwich insula. leg. Hillebrand.' (MEL 587900).

*Rhynchospora spicaeforuis* W.F. Hillebr., Fl. Haw. Is., 477. = *Rhynchospora chineusis* Nees & Meyen subsp. *spiciformis* (W.F. Hillebr.) T. Koyama. 'W. Maui, Sandw. Ins.' (MEL 587912).

## EUPHORBIACEAE

*Antidesua pulvinatum* W.F. Hillebr., Fl. Haw. Is., 403. 'Hawaii. leg. Hillebrand.' (MEL 587938).

*Euphorbia hookeri* Steud.  $\beta$  var *integrifolia* W.F. Hillebr., Fl. Haw. Is., 397 = *Chamaesyce multiforuis* (Hook. & Arn.) Croizat & Degener. 'Maui. Sandwich ins. leg. Hillebrand.' (MEL 1520552).

## GERANIACEAE

*Geranium trideus* W.F. Hillebr., Fl. Haw. Is., 55 = *G. cuneatum* Hook subsp. *trideus* (W.F. Hillebr.) Carlq. & Bissing. 'Haleakala. Sandw. Ins. leg. Hillebrand.' (MEL 1520566).

*Geranium humile* W.F. Hillebr., Fl. Haw. Is., 56. 'On the summit of Mt Eika. leg. Hbd.' (MEL 1520565).

## GESNERIACEAE

*Cyrtandra biserrata* W.F. Hillebr., Fl. Haw. Is., 329 'Molokai. Sandwich Inseln. Leg. Hbd.' (MEL 587948).

*Cyrtandra filipes* W.F. Hillebr., Fl. Haw. Is., 336. 'W. Maui. Sandwich Inseln. leg. Hbd.' (MEL 587918).

*Cyrtandra gracilis* W.F. Hillebr., Fl. Haw. Is., 333. 'Oahu. Leg. Hbd.' (MEL 587919).

*Cyrtandra grayana* W.F. Hillebr., Fl. Haw. Is., 330. 'Maui. Sandwich Inseln. Leg. Hbd.' (MEL 587920).

*Cyrtandra latebrosa* W.F. Hillebr. Fl. Haw. Is., 337 = *Cyrtandra hawaiiensis* C. B. Clarke. 'Oahu. leg. Hbd.' (MEL 587932).

*Cyrtandra lydgatei* W.F. Hillebr., Fl. Haw. Is., 335 'Maui. Sandwich Ins. leg. Hbd.' (MEL 587922).

*Cyrtandra macrocalyx* W.F. Hillebr., Fl. Haw. Is., 329. 'Molokai. Sandwich Inseln. leg. Hbd.' (MEL 587924).

*Cyrtandra paritiifolia* W. F. Hillebr., Fl. Haw. Is., 328 = *C. hashimotoi*  $\times$  *C. platyphylla*. 'Maui. Sandwich Inseln. leg. hbd.' (MEL 587926).

*Cyrtandra procera* W.F. Hillebr., Fl. Haw. Is., 329. 'Molokai. Sandw. Inseln. Leg. Hbd.' (MEL 587926).

## GOODENIACEAE

*Scaevola cylindrocarpa* W.F. Hillebr., Fl. Haw. Is., 268 = *Scaevola chanissoniana* Gaudich. 'Lanai. Sandwich Inseln.' (MEL 587831).

*Scaevola procera* W.F. Hillebr., Fl. Haw. Is., 268. 'Molokai. Sandwich Inseln.' (MEL 587832).

## LAMIACEAE

- Haplostachys rosuarinifolia* W.F. Hillebr., Fl. Haw. Is., 347 = *Haplostachys linearifolia* (Drake) Sherff. 'Molokai, Sandwich Inseln.' (MEL 1520492).
- Phyllostegia aubigua* (A. Gray) W.F. Hillebr. var. *longipes* W.F. Hillebr., Fl. Haw. Is., 350 = *Phyllostegia warshaueri* St. John. 'Maui, Sandwich Inseln. leg. Lydgate.' (MEL 587949).
- Phyllostegia lispida* W.F. Hillebr., Fl. Haw. Is., 353. 'Molokai, Sandwich Insel. leg. Hbd.' (MEL 587950).
- Stenogyne bifida* W.F. Hillebr., Fl. Haw. Is., 358. 'Molokai, Sandwich Inseln.' (MEL 587951).
- Stenogyne viridis* W.F. Hillebr., Fl. Haw. Is., 361. 'Maui, Sandwich Inseln. leg. Hbd.' (MEL 587954).

## LOGANIACEAE

- Labordia grayana* W.F. Hillebr., Fl. Haw. Is., p. 290 = *Labordia hedyosmifolia* Baill. 'Maui, Sandwich Inseln. leg. Hbd.' (MEL 587790)
- Labordia lophocarpa* W. F. Hillebr., Fl. Haw. Is., p. 289 = *Labordia waiolau* Wawra 'Molokai, Sandwich Ins.' (MEL 587792).
- Labordia triflora* W.F. Hillebr., Fl. Haw. Is., 293. 'Molokai, Sandwich Inseln. leg. Hbd.' (MEL 587795).

## MALVACEAE

- Hibiscus kokio* W. F. Hillebr. Flora 56: 174 (1873). 'Molokai. leg. Hillebrand.' (MEL 587718).

## MENISPERMACEAE

- Cocculus virgatus* W. F. Hillebr., Fl. Haw. Is., 8 = *Cocculus trilobus* (Thunb.) DC. 'Lanai, Sandw. Ins. leg. Hillebrand.' (MEL 587721).

## MYRSINACEAE

- Eubelia pacifica* W.F. Hillebr., Fl. Haw. Is., 282. 'Maui, Sandwich Ins. leg. Hbd.' (MEL 587796).
- Myrsine lauaiensis* W.F. Hillebr., Fl. Haw. Is., 281. 'Lanai, Sandwich In. leg. Hbd.' (MEL 611633).

## NYCTAGINACEAE

- Pisouia sandwicensis* W.F. Hillebr., Fl. Haw. Is., 369. 'Lanai, Sandiwch Ins. leg. Hillebrand.' (MEL 1520475).

## ORCHIDACEAE

- Habenaria holochila* W.F. Hillebr., Fl. Haw. Is., 432 = *Platantthera holochila* (Hillebr.) Kraenzl. 'Kanai, leg. Knudsen.' (MEL 1520529)

## PIPERACEAE

- Peperomia hypoleuca* Miq. b var. *montis eeka* W.F. Hillebr., Fl Haw. Is., 422 = *P. eekana* C.DC. 'West Maui, Sandwich Ins. leg. Hillebrand.' (MEL 1520494).
- Peperomia macraeana* C. DC. b var. *picta* W. F. Hillebr., Fl. Haw. Is., 421 = *P. macraeana* C. DC. 'W. Maui, Sandw. Inseln. leg. Hillebrand.' (MEL 587955).
- Peperomia mauiensis* Wawra b var. *parvifolia* W.F. Hillebr., Fl. Haw. Is., 425 = *P. ligustrina* W.F. Hillebr. 'West, Maui, Sandwich I. leg. Hillebrand.' (MEL 587956).

## PITTSPOURACEAE

- Pittosporum cauliflorum* Mann var *fulvum* W.F. Hillebr., Fl. Haw. Is., 25 = *P. confertiflorum* A. Gray. 'Ewa, Waiahua., Oahu. leg. Hillebrand.' (MEL 587722).
- Pittosporum glomertum* var *acutisepala* W.F. Hillebr., Fl. Haw. Is., 23 = *Pittosporum glabrum* Hook. & Arn. 'Niu, Oahu. leg. Hillebrand.' (MEL 587724).
- Pittosporum kauaiense* W.F. Hillebr., Fl. Haw. Is., 25. 'Kauai, leg. Knudsen.' (MEL 587725). Haas (1977: 143) lectotyped this taxon on the description.

## POACEAE

- Agrostis sandwicensis* W.F. Hillebr., Fl. Haw. Is., 515. 'Oahu. leg. Hillebrand.' (MEL 1520483).
- Eragrostis grandis* W.F. Hillebr., Fl. Haw. Is., 528. 'Molokai. Sandw. Ins. leg. Hillebrand.' (MEL 1520486).
- Eragrostis pheloides* W. F. Hillebr., Fl. Haw. Is., 530 = *Eragrostis variabilis* (Gaudich.) W.F. Hillebr. 'Haleakala: Sandw. I.' (MEL 1520487).
- Eragrostis thyrsoidea* W. F. Hillebr., Fl. Haw. Is., 529 = *E. variabilis* (Gaudich.) W. F. Hillebr. 'Oahu. leg. Hillebrand.' (MEL 1520488).
- Eragrostis variabilis* (Gaudich.) b var. *ciliata* W.F. Hillebr., Fl. Haw. Is., 529 = *Eragrostis variabilis* (Gaudich.) Steud. 'Sandwich Inseln.' (MEL 1520523).
- Panicum imbricatum* W.F. Hillebr., Fl. Haw. Is., 501 = *Dichanthelium cynodon* (Reichardt) C.A. Clark & Gould 'Mt Eika: Sandwich. I. leg. Hillebrand.' (MEL 1520489).
- Panicum nephelophilum* Gaudich. var *xerophilum* W.F. Hillebr. Fl. Haw. Is. 498 = *Panicum xerophilum* (W.F. Hillebr.) Hitchc. 'Maui. Sandwich I. leg. Hillebrand.' (MEL 1520491).

## PRIMULACEAE

- Lysimachia rotundifolia* W.F. Hillebr., Fl. Haw. Is., 284, *nom. illeg.* = *L. hillebrandii* J.D.Hook. ex A.Gray. 'Oahu. leg. Hbd.' (MEL 587803).

## RHAMNACEAE

- Apluionia ponderosa* W.F. Hillebr., Fl. Haw. Is., 81. 'Molokai. Sandw. In. leg. Hbd.' (MEL 1520399).
- Gouania hillebrandii* Oliver in W.F. Hillebr., Fl. Haw. Is., 83. 'Gullies of Lahaina, Sandwich Ins. leg. Hbd.' (MEL 1520401).

## RUBIACEAE

- Coprosma cymosa* W.F. Hillebr., Fl. Haw. Is., 186. 'Hawaii. leg. Hbd.' (MEL 1520424).
- Coprosma stephanocarpa* W.F. Hillebr., Fl. Haw. Is., 187 = *Coprosma foliosa* A. Gray. 'OH. Maui. Sandwich Ins. leg. Hbd. (MEL 1520413) and 'Maui. Sandwich Ins. leg. Hbd.' (MEL 1520414).
- Kadua foliosa* W.F. Hillebr., Fl. Haw. Is., 164 = *Hedyotis foliosa* (W.F. Hillebr.) Fosberg 'Maui. Sandwich Inseln.' (MEL 1520424).
- Kadua formosa* W.F. Hillebr., Fl. Haw. Is., 165 = *Hedyotis formosa* (W.F. Hillebr.) Fosberg 'Maui. Sandwich Ins. leg. Hbd.' (MEL 1520425).
- Kadua littoralis* W.F. Hillebr., Fl. Haw. Is., 166 = *Hedyotis littoralis* (Hillebr.) Fosberg. 'Molokai. Sandwich. Ins. leg. Hbd.' (MEL 1520429).
- Kadua remyi* W.F. Hillebr., Fl. Haw. Is., 162 = *Hedyotis schlechtendahliana* Steud. 'Lanai. Sandw. Ins.' (MEL 1520432).

## RUTACEAE

- Fagara hawaiiensis* (Hillebr.) Sherff var. *subacuta* Sherff. 'Lanai, Sandw. I.' (MEL 520437). Published by Hillebrand as *Zanthoxylum hawaiiensis* b var. Fl. Haw. Is., 76.
- Pelea molokaiensis* W.F. Hillebr., Fl. Haw. Is., 65. 'Kalea. Molokai. Sandwich Ins. leg. Hillebrand.' (MEL 587806).
- Pelea orbicularis* W.F. Hillebr., Fl. Haw. Is., 67. 'Mount Eka, W. Maui. Sandwich Ins. leg. D. Lydgate.' (MEL 587807)
- Pelea sandwicensis* A. Gray var. *lucens* W.F. Hillebr., Fl. Haw. Is., 66 = *Pelea oahnensis* H. LéV. 'Oahu. leg. Hillebrand.' (MEL 587811)
- Pelea volcanica* A. Gray b var. *grandifolia* W.F. Hillebr., Fl. Haw. Is., 67 = *Pelea volcanica* A. Gray. 'Hawaii. leg. Hillebrand.' (MEL 587873 & 587874).

## SAPINDACEAE

- Sapindus oahnensis* W. F. Hillebr., Fl. Haw. Is., 85. 'Kalihi. Sandw. Inseln. leg. Hbd.' (MEL 1520574).

## SAPOTACEAE

*Chrysophyllum polyuesicum* W.F. Hillebr., Fl. Haw. Is., 277 = *Nesolumma polyuesicum* (W.F. Hillebr.) Baill. 'Lanai. Sandw. Ins. leg. Hbd.' (MEL 587814).

*Sideroxylon spatulatum* W.F. Hillebr., Fl. Haw. Is., 277 = *Pouteria saudwiceusis* (A. Gray) Baehni & Degener. 'Lanai. Sandwich Ins. leg. Hbd.' (MEL 587813).

## SOLANACEAE

*Solanum inoupletum* Dunal b var. *maniensis* W.F. Hillebr., Fl. Haw. Is., 305 = *Solanum inoupletum* Dunal. 'Maui. Sandwich Inseln. leg. Hbd.' (MEL 1520575).

## VIOLACEAE

*Viola helioscopia* W.F. Hillebr., Fl. Haw. Is., 17 = *Viola chauissoniaua* Ging. 'Makaha. Oahu. leg. Hbd.' (MEL 587733).

*Viola robusta* W.F. Hillebr., Fl. Haw. Is., 16 = *Viola chauissoniaua* Ging. subsp. *robusta* (W.F. Hillebr.) W. Wagner, Herbst & Sohmer. 'Molokai. Sandwich I.' (MEL 587734).

## Possible types

## PTERIDACEAE

*Pteris irregularis* Kaulf. b var. *linearis*, W.F. Hillebr., Fl. Haw. Is., 628. The label on the MEL sheet says only "*Pteris irregularis* Kaulf. b. Sandw. Isllds." (MEL 1520621)

*Liudaya alexandri* W.F. Hillebr., Fl. Haw. Is., 622. In the protologue the syntypes were collected by Prof. Alexander and Mr. Lydgate, and by Knudsen. The MEL sheet has no collector noted. (MEL 1520442).

## AMARANTHACEAE

*Nototrichum humile* W.F. Hillebr., Fl. Haw. Is., 373. The label reads 'Wainae. leg. Hillebrand.' In the protologue, Hillebrand cites 'Oahu! Cape Kaena, near the coast.' Waina is near Cape Kaena on the eastern side of the island of Oahu. (MEL 587937).

## RUTACEAE

*Pelea orbicularis* Hillebr., Fl. Haw. Is., 67. The label of the MEL sheet (MEL 587807) reads 'Mount Eika, W. Maui, Sandwich Is. leg. F. Lydgate' The protologue gives this same locality for one of the syntypes, but does not cite Lydgate. In other cases (*c.f. Pittosporum kanaiense*) the collector, if not Hillebrand, was cited. Nonetheless, it is likely that this sheet is a type.

## RUBIACEAE

*Bobea timonioides* Hook., Ic. pl. t. 1070 (1870). The protologue reads 'western end of the Kokala Range, Dr. Hillebrand. n. 186.' The sheet at MEL (MEL 1520405) says only '*Bobea timonioides* [J.D.Hook.] Hbd., Hawaii. leg. Hbr.'

## Types mistakenly reported to be at MEL

The types of the following names are reported by Corn (1983, unpublished), who visited MEL and photographed types of Hillebrand's that she could identify. These photographs have been shared by other workers. In this manuscript Corn reports the following types as being at MEL. These reports are mistaken.

*Peperomia ligustrina* Hillebr. Fl. Haw. Is., 424. Corn lists this name under 'Present Name,' and then has an entry for the 'Name in Hbd., 1888' Under 'Name in Hbd., 1888' Corn lists '*Peperomia maniensis* Wawra b var. *parvifolia*.' Actually, both *P. ligustrina* and *P. maniensis* b var. *parvifolia* are published on the same page. No duplicate of the specimen cited in the protologue of *P. ligustrina*, (*i.e.* 'W. Maui! Waihee, and forms with shorter and proportionally broader, somewhat obtuse, 1-nerved leaves from *Kaanapali*, about 2000 ft. above the sea.') has been located at



MEL. The type of *Peperomia mauiensis* Wawra *b* var. *parvifolia* (q.v.) is erroneously included in Corn's manuscript of type-photos as the type of the former name.

*Cyrtandra malacophylla* C.B. Clarke. Monogr. phan. 5: 227 (1883). The protologue reads "Kauai, Hillebrand, in hb. K." The sheet Corn shows in photo has a label reading 'Maui...', and is in actuality the type of *Cyrtandra parritifolia* (q.v.).

## References

- Corn, C.A. (1983). The Melbourne Hillebrand collection of Hawaiian plants. Newsletter, Hawaiian Botanical Society. **22**, 20–21.
- Corn, C.A. (1983, unpublished manuscript, distributed by author). The Hillebrand Hawaiian Collection at Melbourne. [A manuscript of photographs of sheets from the Hillebrand Herbarium deposited at MEL. Some photographs are annotated with type designations.] Deposited at the Library, Royal Botanic Gardens, Melbourne.
- Haas, J.E. (1977). The Pacific species of *Pittosporum* Banks *ex* Gaertn. (Pittosporaceae). *Allertonia* **1**, 73–167.
- Hillebrand, W. (1888). Flora of the Hawaiian Islands. (B. Westermann & Co.: New York).
- Lammers, T.G. (1988) New taxa, new names, and new combinations in the Hawaiian Lobelioideae (Campanulaceae). *Systematic Botany* **13**, 496–508.
- Lammers, T.G. (1991) Systematics of *Clermontia* (Campanulaceae-Lobelioideae). *Systematic Botany Monographs* **32**, 1–97
- Lammers T.G. (1994) Typification of the names of hawaiian *Lobelioideae* (Campanulaceae) published by Wilhelm Hillebrand or based upon his specimens. *Taxon* **43**, 545–572.
- Lowrey, T.K. (1986). A biosystematic revision of Hawaiian *Tetramolopium* (Compositae: Astereae). *Allertonia* **4**, 203–265.
- Pescott, R.J.M. (1982). The Royal Botanic Gardens, Melbourne. A history from 1845 to 1970. (Oxford University Press: Melbourne.)
- Rock, J.F. (1919). A monographic study of the Hawaiian species of the tribe Lobelioideae family Campanulaceae. *Memoirs of the Bernice Pauahi Bishop Museum* **7**, 1–395.
- Sayre, G. (1975). Cryptogamae exsiccatae. An annotated bibliography of exsiccatae of Algae, Lichenes, Hepaticae and Musci. V. Unpublished Exsiccatae. I. Collectors. *Memoirs of the New York Botanical Garden* **19**, 27–423.
- Stafleu, F. and Cowan, R. (1979). Taxonomic Literature – II. Vol. II, Regnum Veg. **98**, 1–991.
- Wagner, W.L., Herbst, D.R., and Sohmer, S.H. (1990). 'Manual of the Flowering Plants of Hawai'i.' (University of Hawai'i Press, Bishop Museum Press: Honolulu).